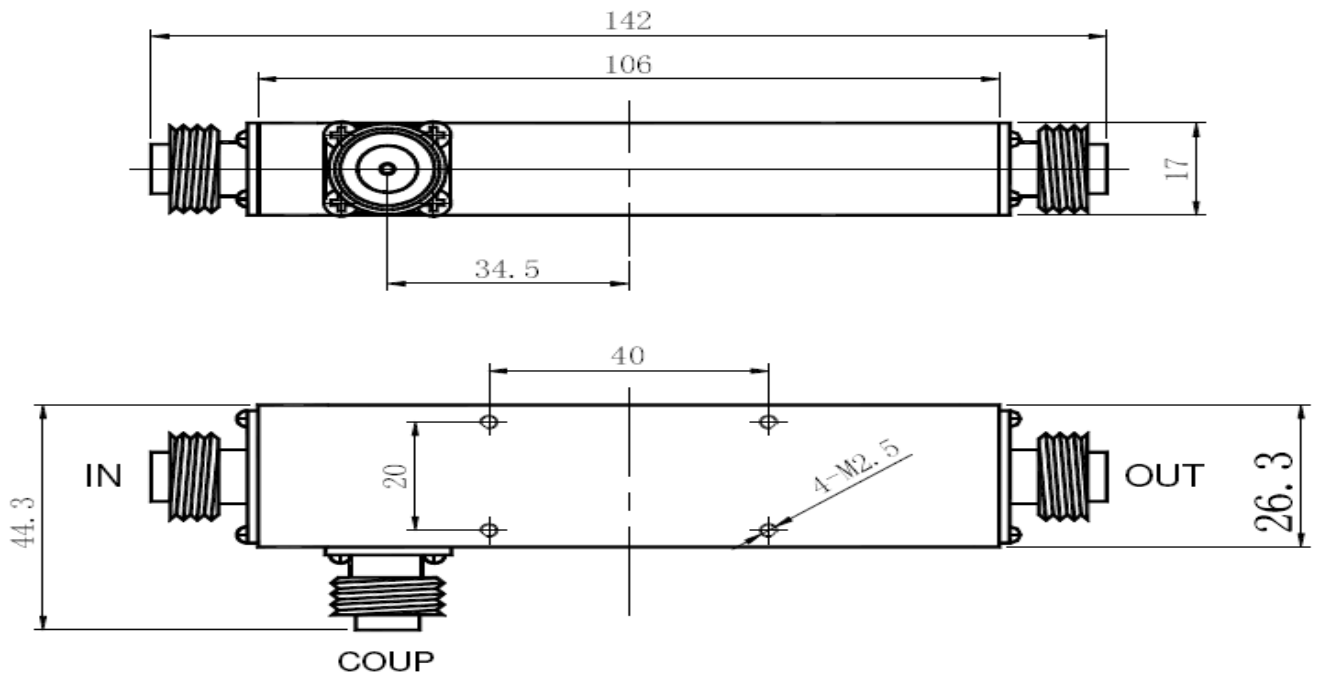


## Directional Coupler CSG 3800200 DC-5

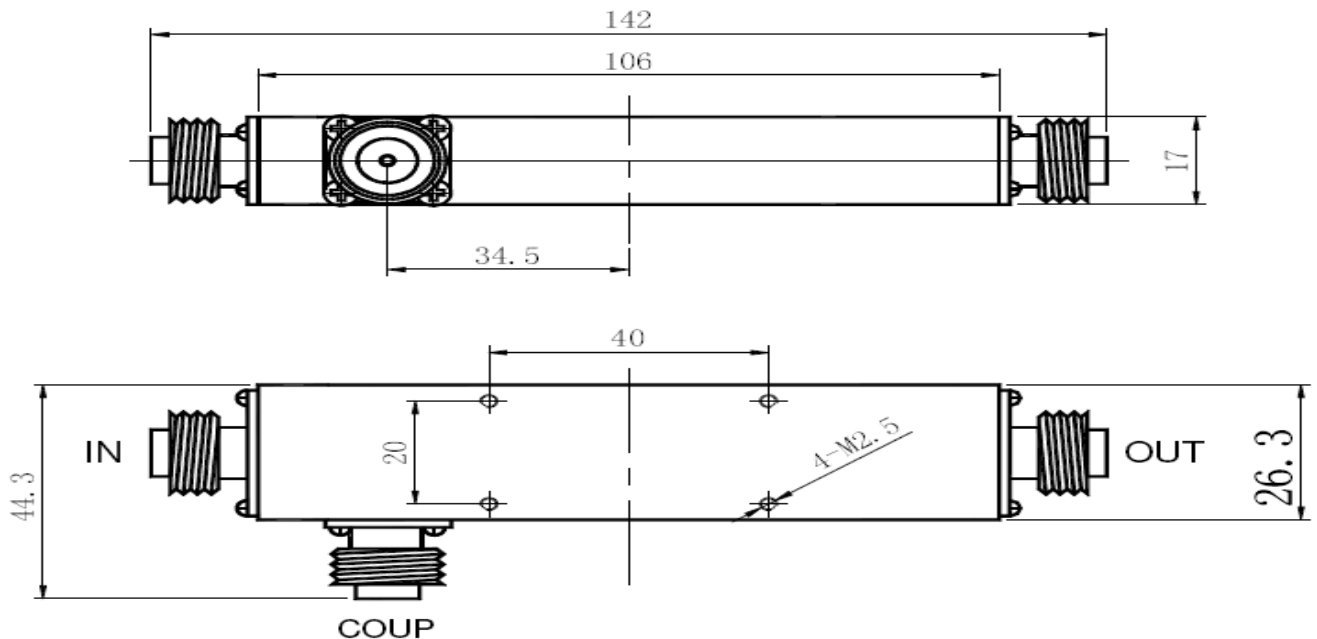
PARAMETERS	SPECIFICATIONS
Frequency Range	800 ~ 2500 MHz
Directivity	$\geq 20$ dB
Coupling	5.0 dB
Coupling Loss	$\leq 1.65$ dB
Insertion Loss	$\leq 2.0$ dB
Impedance	50 $\Omega$
PIM	$\leq -140$ @+43dBm X 2dBc
Connector	N(F)
Power Rating	100Watt
Temperature	-40 $^{\circ}$ ~+70 $^{\circ}$ C
Dimensions	106 x 26.3 x 17 mm
Weight	0.17 Kg
Environment	Indoor use



**WE ALSO UNDERTAKE DESIGNS PE TOUR REQUIRMENT**

## Directional Coupler CSG 3800100 DC-10

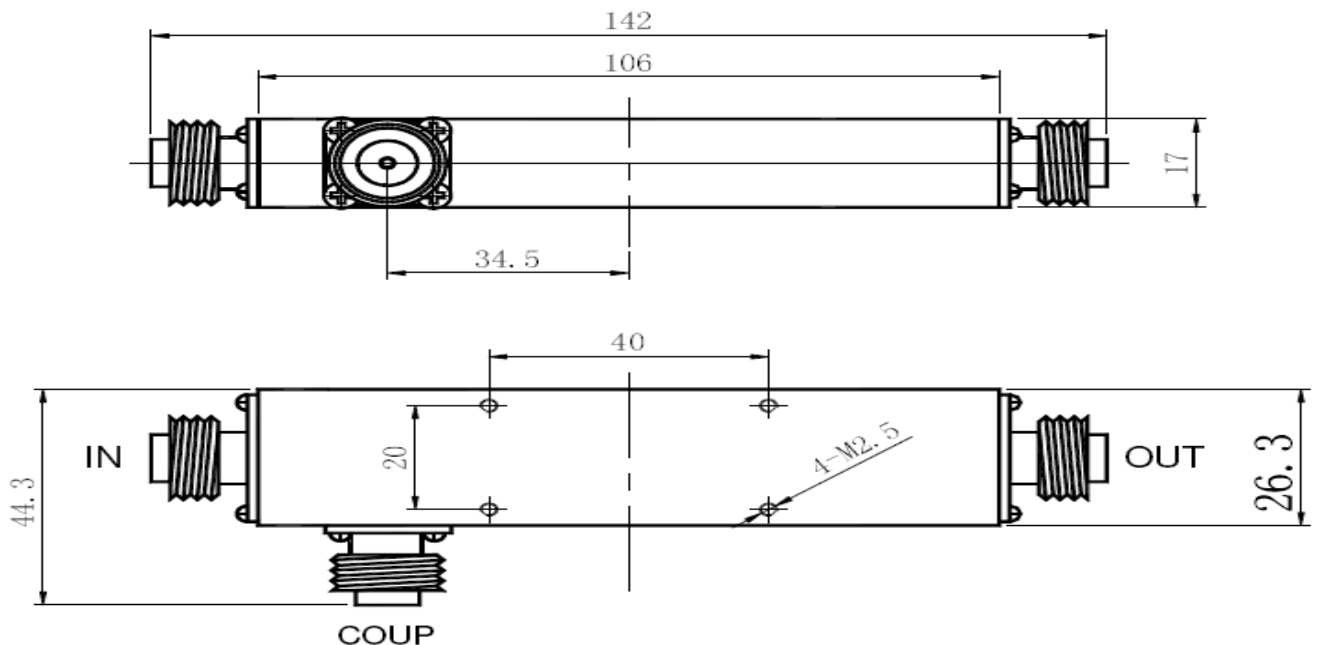
PARAMETERS	SPECIFICATIONS
Frequency Range	800 ~ 2500 MHz
Directivity	$\geq 20$ dB
Coupling	10 dB
Coupling Loss	$\leq 0.46$ dB
Insertion Loss	$\leq 0.8$ dB
Impedance	50 $\Omega$
PIM	$\leq -140$ @+43dBm X 2dBc
Connector	N(F)
Power Rating	100Watt
Temperature	-40 $^{\circ}$ ~+70 $^{\circ}$ C
Dimensions	106 x 26.3 x 17 mm
Weight	0.17 Kg
Environment	Indoor use



**WE ALSO UNDERTAKE DESIGNS PE TOUR REQUIRMENT**

## Directional Coupler CSG 3800200 DC-15

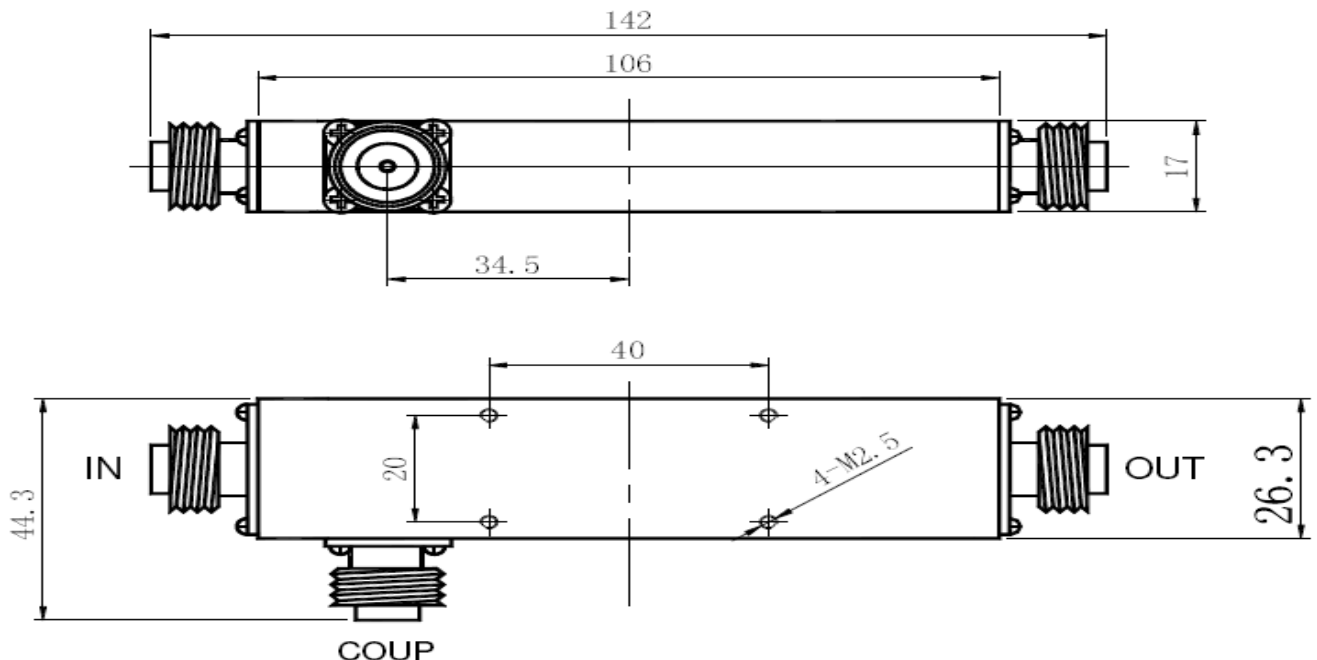
PARAMETERS	SPECIFICATIONS
Frequency Range	800 ~ 2500 MHz
Directivity	$\geq 20$ dB
Coupling	15.0 dB
Coupling Loss	$\leq 0.14$ dB
Insertion Loss	$\leq 0.45$ dB
Impedance	50 $\Omega$
PIM	$\leq -140$ @+43dBm X 2dBc
Connector	N(F)
Power Rating	100Watt
Temperature	-40°~+70°C
Dimensions	106 x 26.3 x 17 mm
Weight	0.17 Kg
Environment	Indoor use



**WE ALSO UNDERTAKE DESIGNS PE TOUR REQUIRMENT**

## Directional Coupler CSG 3800200 DC-20

PARAMETERS	SPECIFICATIONS
Frequency Range	800 ~ 2500 MHz
Directivity	$\geq 20$ dB
Coupling	20 dB
Coupling Loss	$\leq 0.04$ dB
Insertion Loss	$\leq 0.8$ dB
Impedance	50 $\Omega$
PIM	$\leq -140$ @+43dBm X 2dBc
Connector	N(F)
Power Rating	100Watt
Temperature	-40 $^{\circ}$ ~+70 $^{\circ}$ C
Dimensions	106 x 26.3 x 17 mm
Weight	0.17 Kg
Environment	Indoor use



**WE ALSO UNDERTAKE DESIGNS PE TOUR REQUIRMENT**