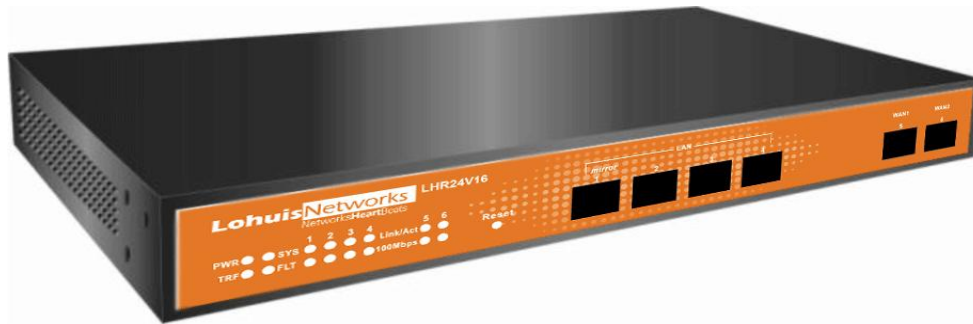


## VPN Router

### Model : LOHU R24V16

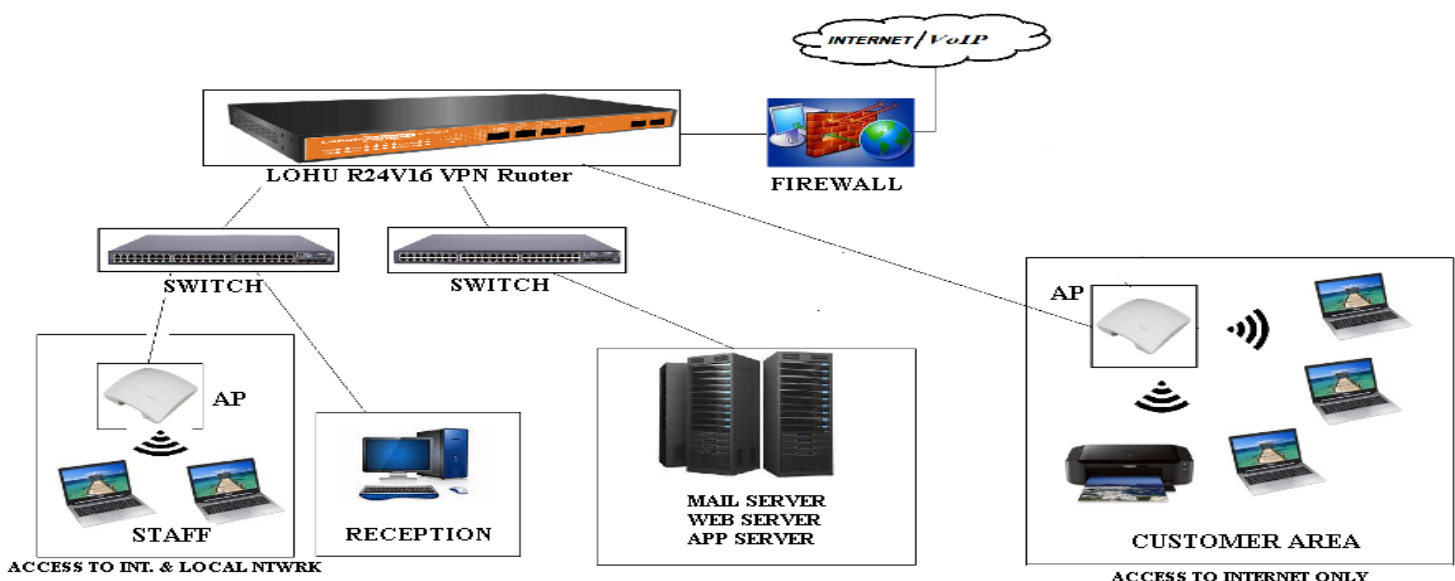
LOHU R24V16 VPN Router support network flow distribution based on bandwidth ratio to optimize the bandwidth utilization. Under the DHCP mode MAC address modification and cloning are available. 2-WAN ports design provides 2 Internet connections support load balancing and real-time backup. It supports packet filtering based on source/destination IP address and ensures the stability and security of your router and network.



### Features

- Support IPSec, L2TP and PPTP VPN, which can be used alone or combined.
- Support dynamic IP address VPN connections.
- Dual WAN ports support mixed connections of DSL, fiber optical and Cable Modem.
- Under the PPPoE mode 3 dial modes are provided (Always On, On Demand and Manual).
- Support Link Quality Monitoring (LQM) Offer management of dialling time (start time and end time), to prevent network waste from negligence.
- Support policy-based routing of different ISPs.
- Support schedule-based ACL (Control the Internet access and protect the internal network against external attacks.)

### Application Diagram



## Technical Specifications

| Parameters              | Specifications  |
|-------------------------|---|
| Throughput              | 200 Mbps  |
| Networking              | 10/100/1000M LAN/WAN port, auto MDI/MDIX and auto-Negotiation with status LEDs.   |
|                         | 4 LAN ports, 2 WAN ports  |
|                         | Support Load Balancing  |
|                         | VPN Server ,VPN Client ,Support Site-to-site VPN and remote access VPN (client-to-site)   |
|                         | Support UP To 16 Tunnel   |
|                         | Layer 7 filter based on URL, keyword and website  |
|                         | Support Web-based and PPPoE-based Authentication  |
|                         | Support IP/MAC binding  |
|                         | Support DDNS  |
|                         | Support policy-based routing of different ISPs  |
|                         | Support Link Quality Monitoring (LQM);  |
|                         | Support packet filtering based on source/destination IP address   |
|                         | Support schedule-based ACL  |
|                         | Support aggressive mode   |
| Operating Temp          | 0°C ~ 50°C  |
| Operating humidity      | 10~90%, non-condensing  |
| Protocols and standards | IEEE 802.11n, IEEE 802.11b, IEEE 802.11g, IEEE 802.3af<br>IP, TCP, ARP, UDP, ICMP, DHCP, HTTP, TFTP   |
| Security                | Super abilities of defence against internal/external attacks (ARP spoofing attacks, port scanning, DoS/DDoS attacks, Blaster, Worm,Sasser, SQL slammer, etc.) |