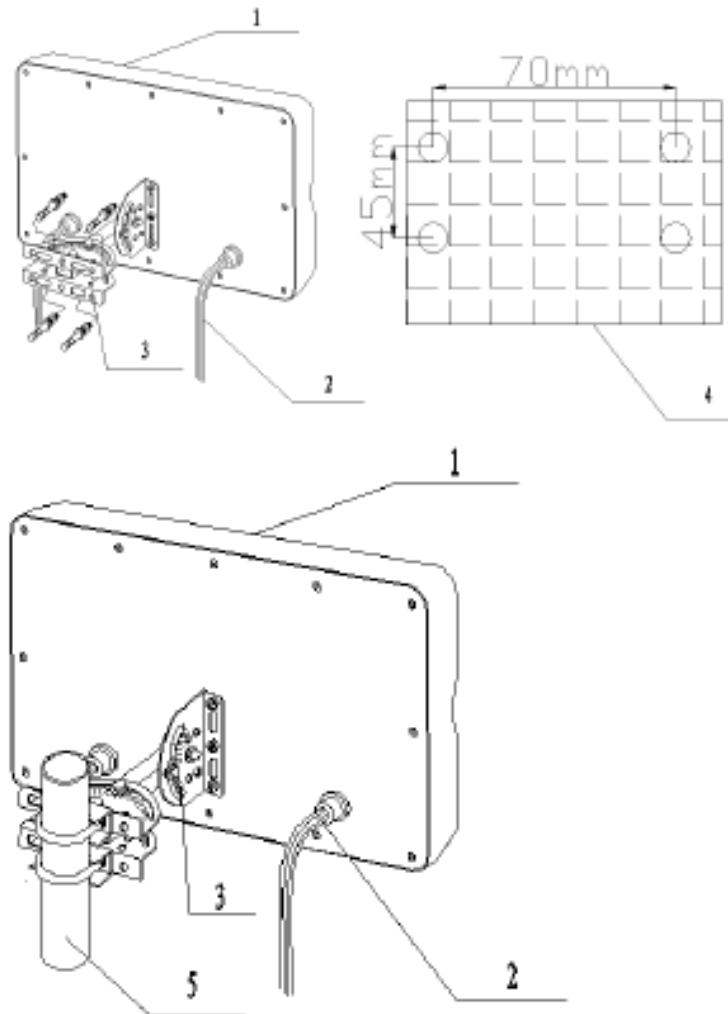


2.4 / 5.0 GHz Dual Band MIMO Panel Antenna REN 62451XX PNT

PARAMETERS	SPECIFICATIONS	
Frequency Band	2400 – 2500 MHz	5150 – 5850 MHz
Gain	3x13.0 dBi	3x12.0 dBi
VSWR	≤ 2 : 1	
Polarization	2 x Vertical and 1 x Horizontal	3 x Vertical
Horizontal Beamwidth	36°	55°
Vertical Beamwidth	36°	48°
Isolation	≥22 dB	
Front to Back Ratio	≥20 dB	
Max. Power	50 Watt	
Impedance	50Ω	
Connector	RP-TNC [M]	
Dimension(Approx)	400 x 220 x 35 mm	
Weight(Approx)	2.3 kg	
Rated Wind Velocity	210 km/hr	
Pole	Φ 40 ~ ϕ50 mm	



Installation Sketch



- 1、 Antenna
- 2、 Cable(PG13.5 Cable Fixation Kit)
- 3、 Bracket. $\pm 20^\circ$ AZ plane adjustment and $\pm 60^\circ$ EL plane adjustment
- 4、 Wall install with 4-M6 \times 50 mm bolt.
- 5、 Mast installation. $\Phi 40$ to $\Phi 50$ mm pole supplied by customer.

Note: Mounting Hardware and Brackets are supplied with Antenna

WE ALSO UNDERTAKE DESIGNS PER YOUR REQUIREMENT