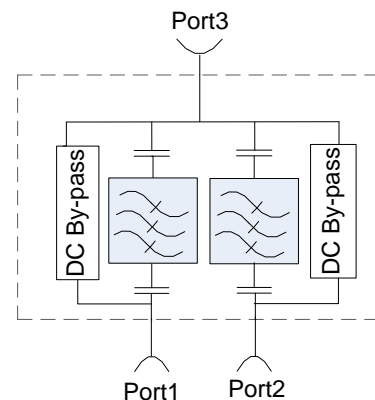
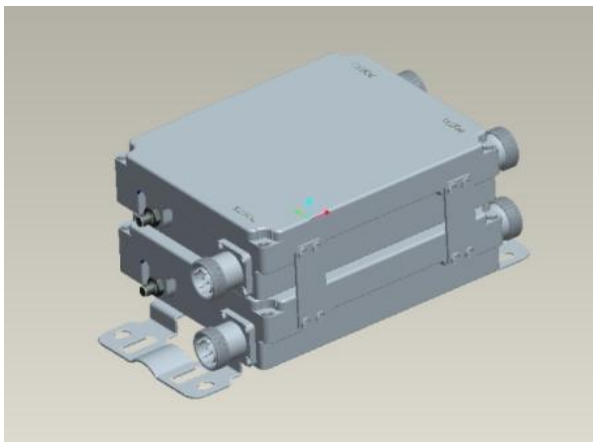


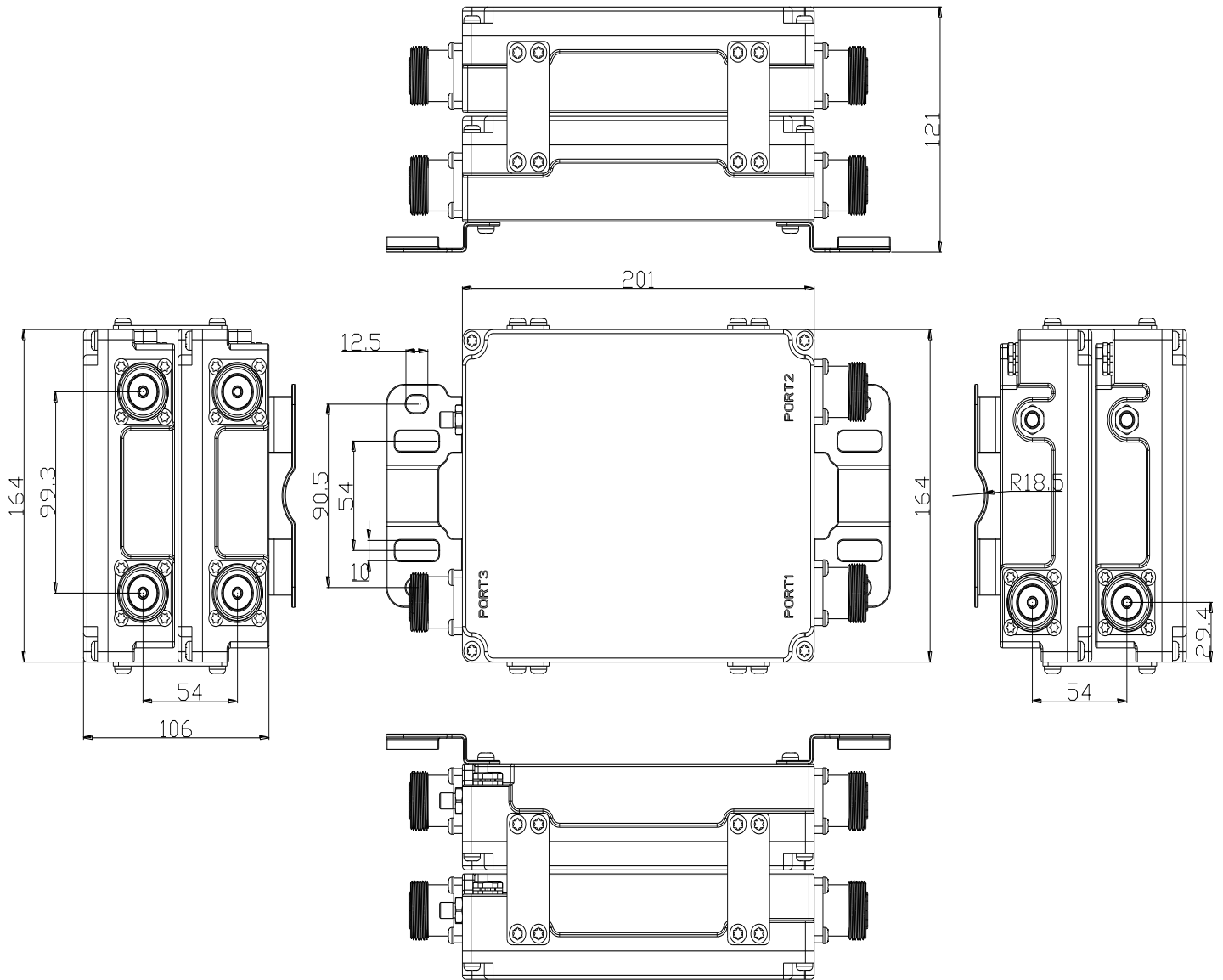


DCS1800 MHz & UMTS2100 MHz Diplexer / Combiner Model:CSG-COMB-DIP-1721D

PARAMETERS	SPECIFICATION	
Ports	Port 1	Port 2
Frequency Band	1710 - 1880 MHz	1920 - 2170 MHz
Insertion Loss	≤ 0.4 dB Typical(0.25 dB)	
Ripple in Band	≤ 0.3 dB	
Isolation	≥ 60 dB	
VSWR	≤ 1.25	
Impedance	50 Ω	
Input Power	250 Watt	300 Watt
PIM3	-150dBc @ +43dBm x 2	
DC Pass Current	Max. 2500mA (Between All Ports)	
Lightning Protection	10KA : 8/20 s pulse (IEC 801-5)	
MTBF Hours	≥ 500,000	
Connectors	3-DIN-Female	
Operating Temperature	-20 °C ~ + 55 °C	
Storage Temperature	-35 °C ~ + 75 °C	
Relative Humidity	5 ~ 95 %	
Application	IP66	
Weight	4 Kg	
Dimension (Approx)	201 × 164 × 106 mm (Without connectors)	



Outline Drawing:



WE ALSO UNDERTAKE DESIGNS PER YOUR REQUIREMENT