

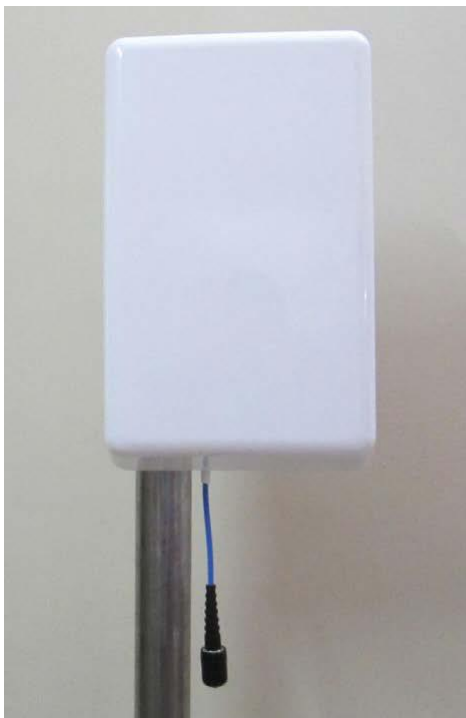


TETRA / UHF PANEL ANTENNA

CSG 6374406 PN

CSG 6374406 series high performance Panel antenna offers wide coverage with low side lobes for TETRA/UHF band. The antenna is protected from lightning by direct ground feature. The antenna can be used for both Outdoor and Indoor installations.

PARAMETERS	SPECIFICATIONS
Frequency Range	370 - 440 MHz
Gain	6.0 ± 1.0 dBi
VSWR	$\leq 1.5:1$
Polarization	Vertical
Horizontal Beam width	65°
Vertical Beam width	70°
Front to Back Ratio	≥ 20 dB
PIM @ 3rd Order, 2 x 20 W	< -145 dBc
Max. Power	100 Watt
Impedance	50Ω
Connector	N(F)
Radome Material	ABS, White, RAL9003
Mounting kit	Wall mount or Pole mount
Dimensions (Approx.)	105 x 186 x 63 mm
Weight (Approx.) without Mounting Kit	1.5 kgs
Operating Temperature	-40° to $+60^\circ$
Operating Humidity	$< 95\%$



Wall Mount Accessories



Pole Mount Accessories



Note: Mounting Hardware and Brackets are supplied with Antenna

WE ALSO UNDERTAKE DESIGNS PER YOUR REQUIREMENT

CSG Networks Pvt. Ltd. 109-110, HUDA Industrial Area Sector-59 Faridabad, Haryana-121004 INDIA

E-mail: sales@csgnets.com, Website: www.csgnets.com